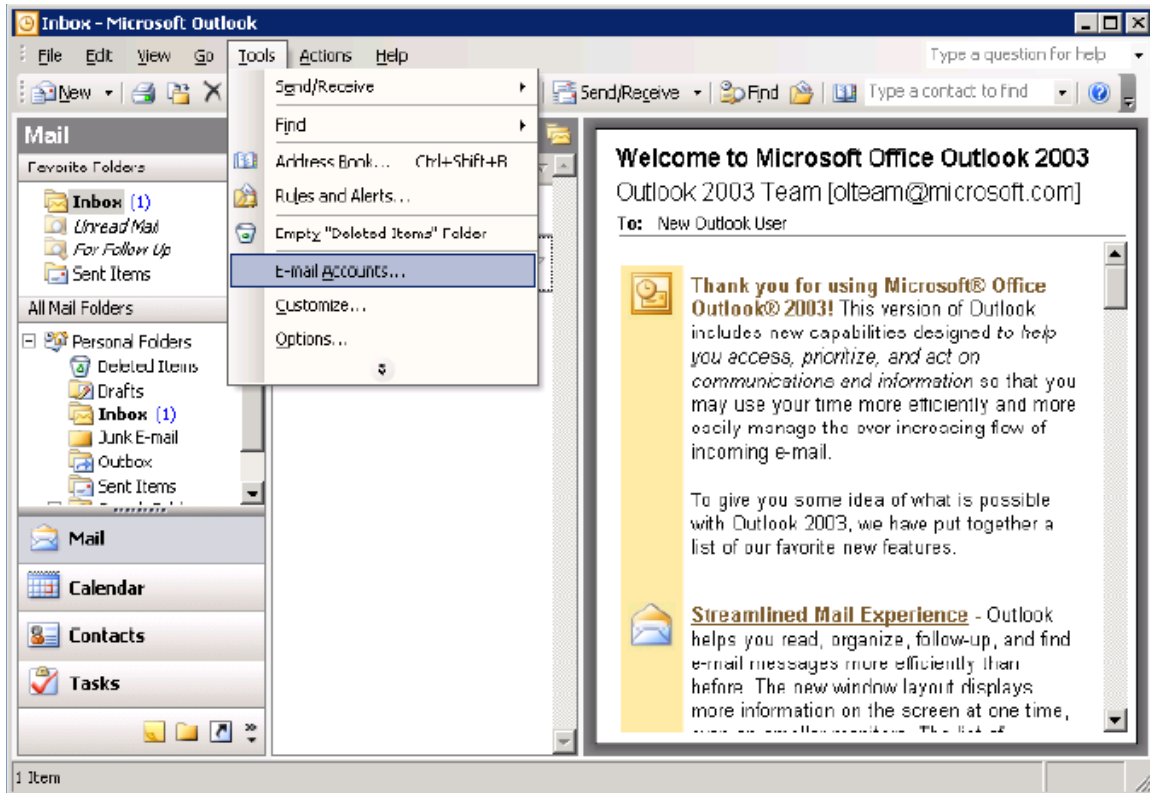


Configurare cont e-mail folosind Microsoft Outlook

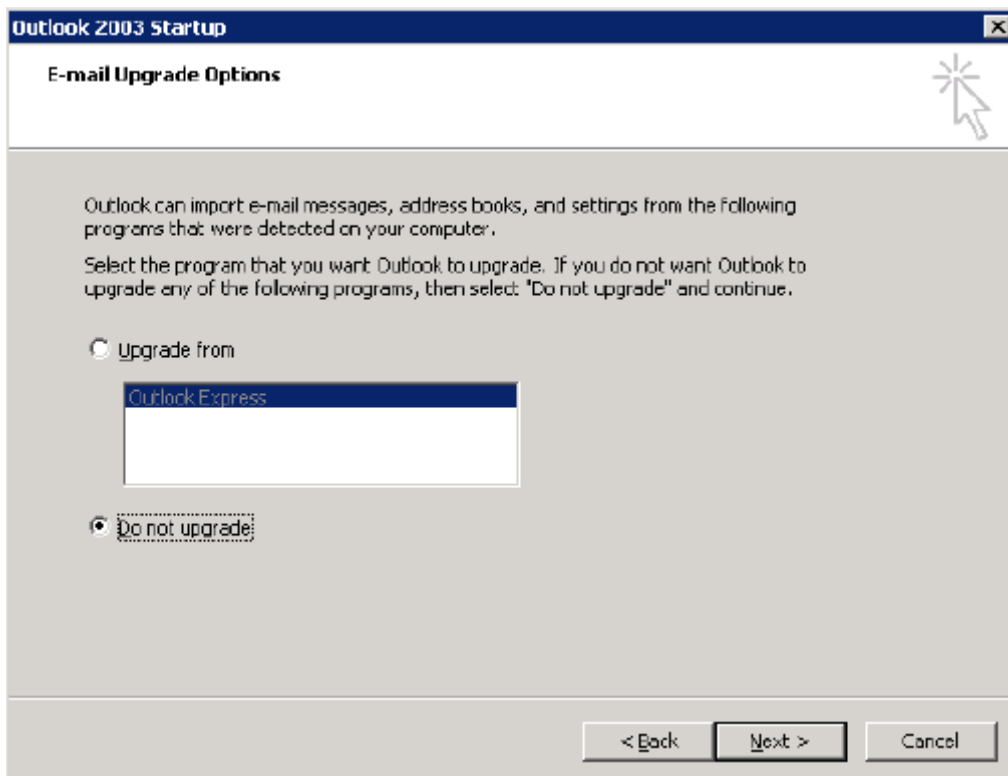
Pas 1: Se deschide meniul Tools -> E-mail Accounts



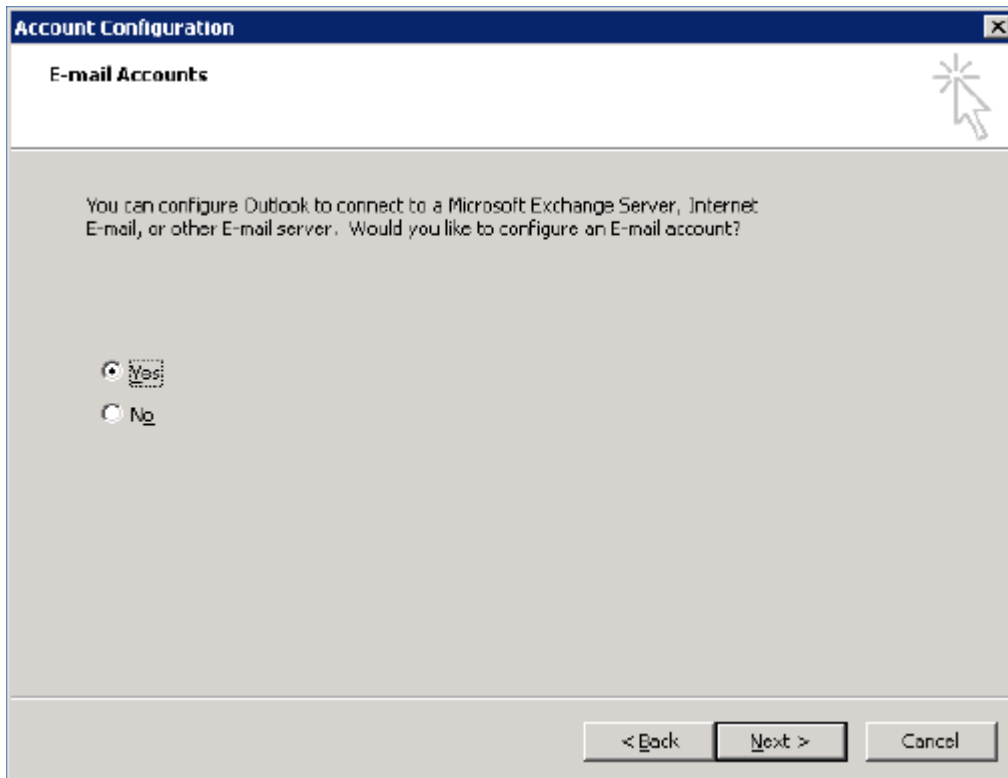
Pas 1 (wizard): Welcome



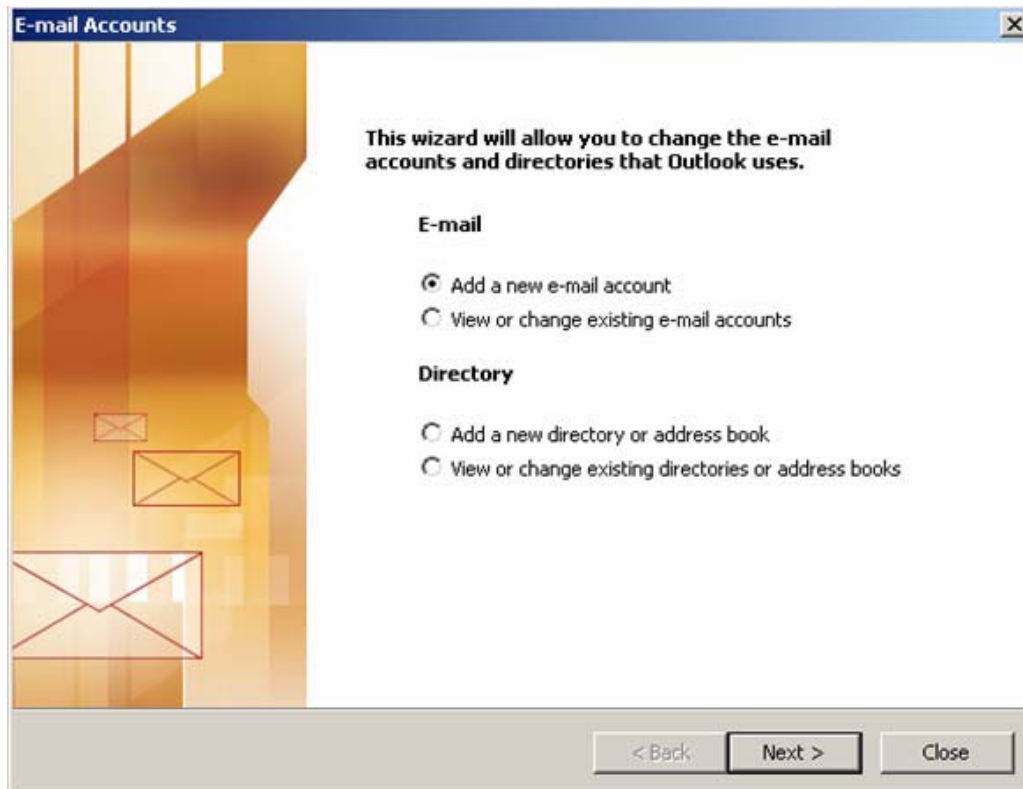
Pas 2 (wizard): Selectati Do not upgrade (decat daca ati configurat/folosit deja Outlook Expres - nerecomandabil)



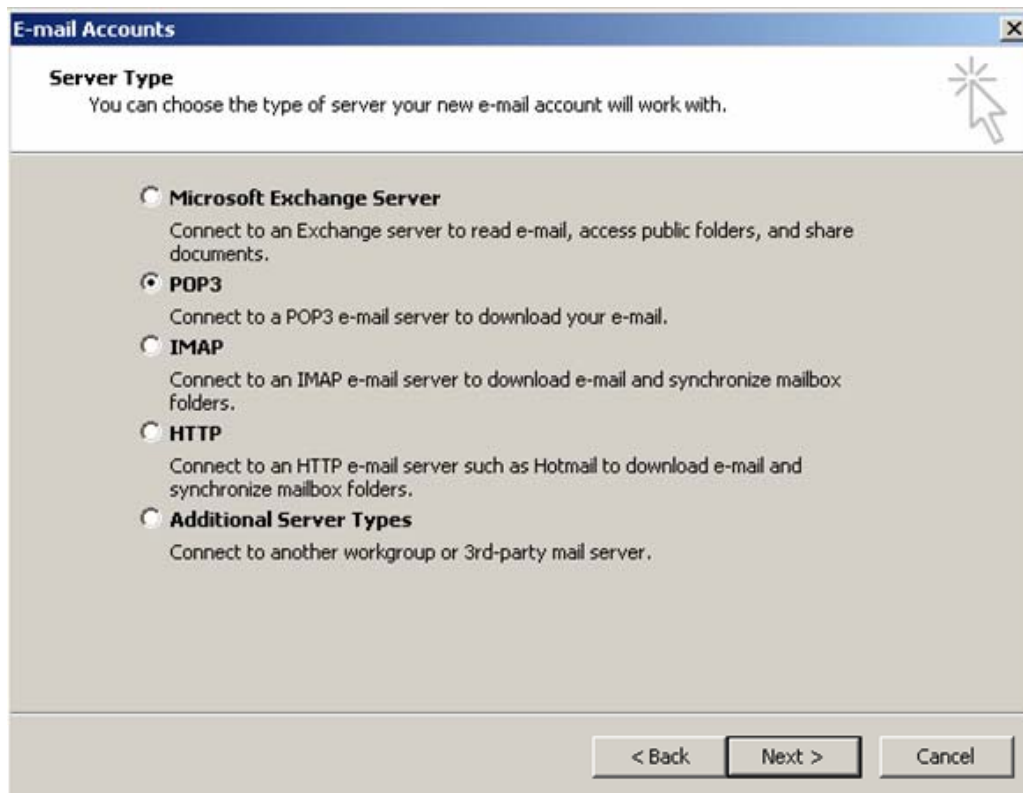
Pas 3 (wizard): Selectati raspunsul Yes la intrebarea “Would you like to configure an Email Account?”



Pas 2: Din fereastra aparuta se selecteaza Add a new e-mail account



Pas 3: Selectati POP3



Pas 4: Se completeaza campurile conform descrierii de mai jos

- Your Name: Prenume Nume (exemplu Cristi Ionescu)
- E-mail Address: adresa de e-mail completa username@domeniu.ro (exemplu cristi.ionescu@dialtelecom.ro)
- Incoming mail server (POP3): a.mx.dialtelecom.ro
- Outgoing mail server (SMTP): a.mx.dialtelecom.ro
- User name – [username-domeniu](#) (exemplu cristi.ionescu-dialtelecom)
- Password – parola setata

E-mail Accounts

Internet E-mail Settings (POP3)
Each of these settings are required to get your e-mail account working.

User Information

Your Name:

E-mail Address:

Server Information

Incoming mail server (POP3):

Outgoing mail server (SMTP):

Logon Information

User Name:

Password:

Remember password

Log on using Secure Password Authentication (SPA)

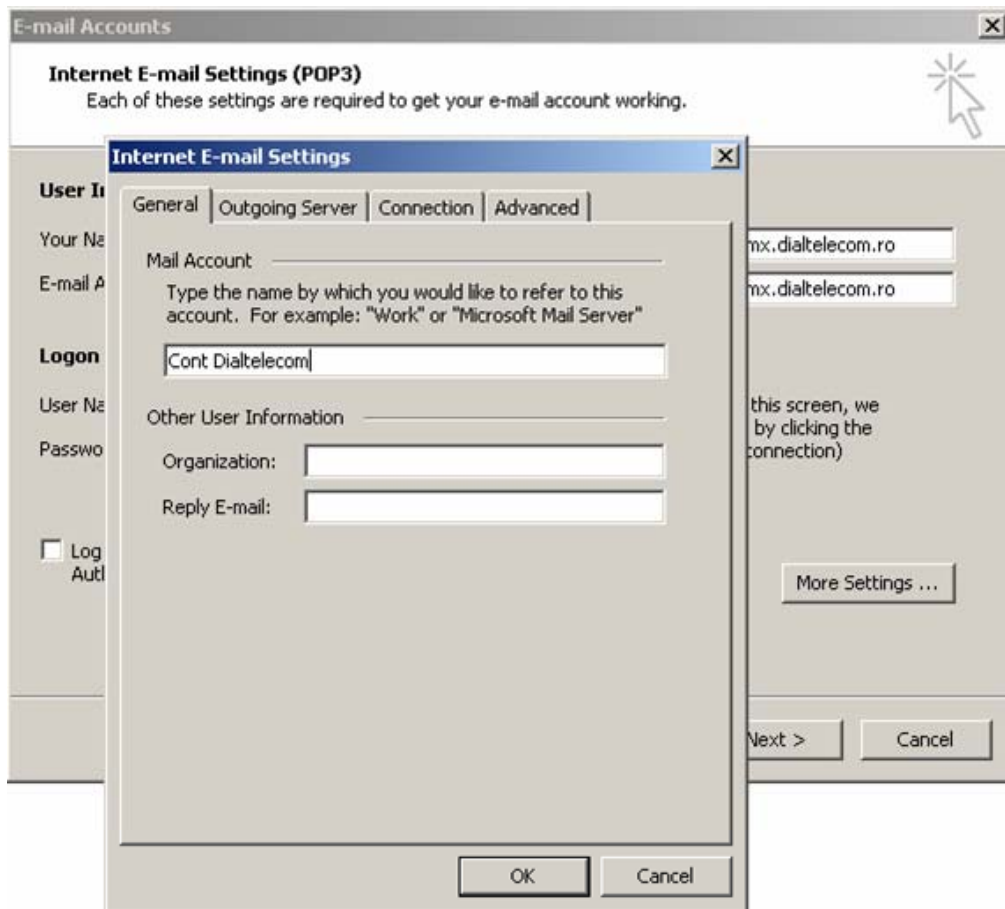
Test Settings

After filling out the information on this screen, we recommend you test your account by clicking the button below. (Requires network connection)

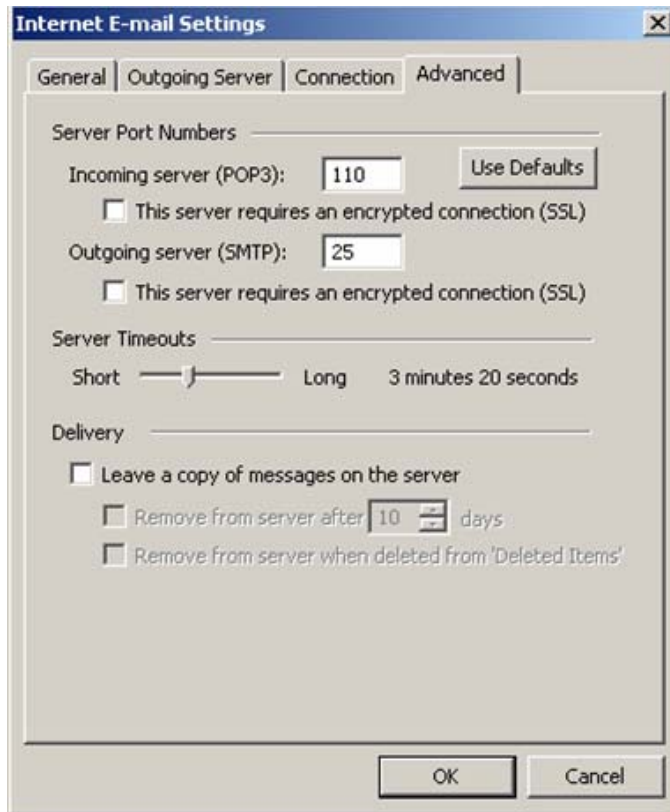
Pas 5: Modificare parametri

Click butonul More Settings.

- In tabul General – Mail account - se trece un nume sugestiv pentru acest cont (exemplu Cont Dialtelecom)

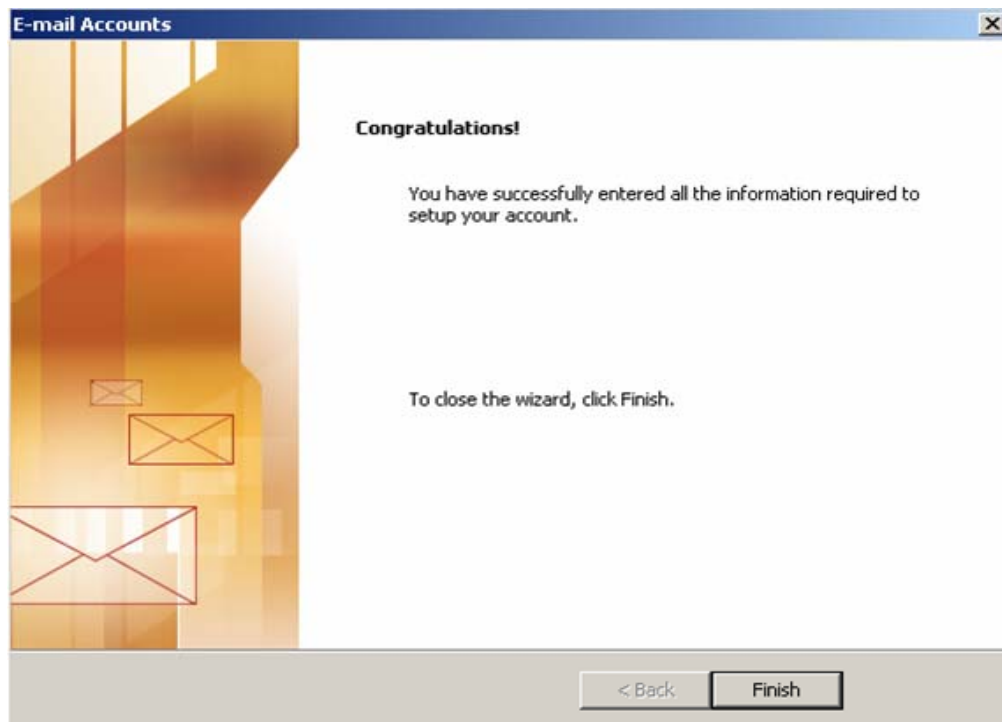


- In tabul Advanced – se poate modifica Server Timeouts - deplasati cursorul in capatul din dreapta; util in cazul in care se primesc/trimit mailuri de dimensiuni mai mari, iar viteza de transfer este mica.
- ~ se debifeaza campul Leave a copy of messages on server – se evita astfel umplerea spatiului alocat contului dumneavoastra, pe serverul Dialtelecom.



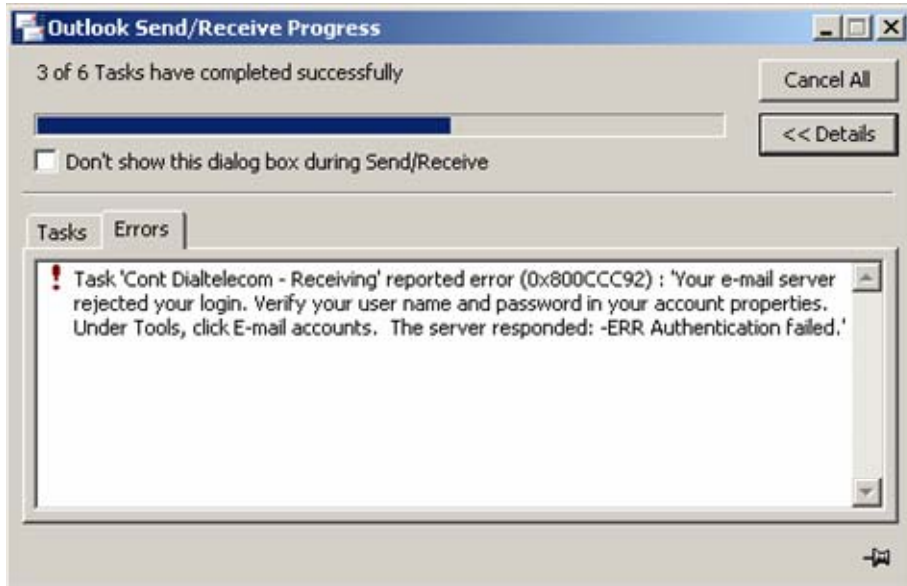
Pentru a trece la pasul urmator, click OK si Next

Pas 6: Finalizare – click Finish



Pas 7: Pentru receptionarea mesajelor stocate pe server si trimiterea celor pregatite, se apasa butonul Send/Receive.

Se observa fereastra de sincronizare. Pentru informatii detaliate asupra operatiilor apasati butonul Details. In caz de eroare, vi se ofera informatii suplimentare ce pot fi verificate pe site-ul <http://search.microsoft.com>.



In caz ca perechea Username/Password este gresita, veti primi un mesaj de eroare impreuna cu un pop-up window in care sunteti rugat sa introduceti datele corecte (atentie la litere MARI/mici)



Pentru mai multe informatii, contactati Departamentul Relatii Clienti Dialtelecom la numarul **021 529 6402** sau **0800 390 390** (numar gratuit)